



Coordinated Specialty Care Program

Corrigan Mental Health Center

Welcoming Remarks



An Integrated Mental Health Center

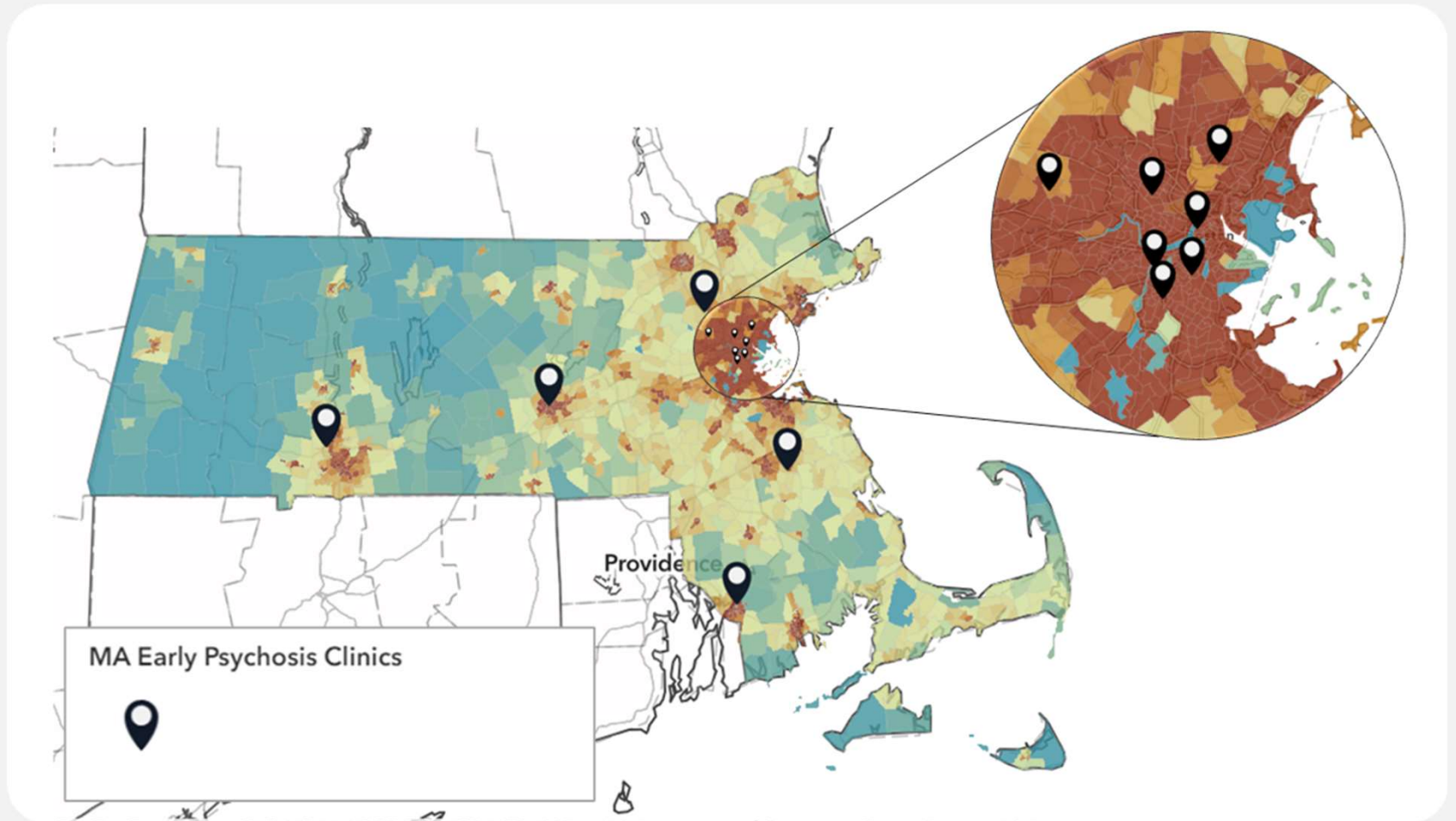
Corrigan offers traditional DMH specialty services

Additionally has full continuum of care within the facility, including urgent and acute services open to the community

PHP

Inpatient Unit

Early Psychosis Services in Mass.



MAPNET (2023)

Opening of Corrigan CSC



Recognizing the need for specialty services for those with early psychosis, Corrigan added CSC to available services in October, 2022 to serve individuals and their families in the New Bedford and Fall River areas.



Building of success of programs like Partial Hospital which can provide immediate access to services directly from the community

Welcome to CSC

Corrigan Mental Health
Clinic outpatient services

CSC is a recovery-oriented
team approach to treating
Early psychosis

Early intervention promotes
easy access to care and uses
shared decision making;
working in collaboration with
providers and natural
supports

Psychosis is more common that you may think

Prevalence **3%** -Lifetime prevalence of psychotic disorders

Age 21 -Average (median) age of onset

Approximately **2,100** -2015 estimated annual incidence in MA

Treatment Average adolescent is psychotic for **18.7 months** before treatment; WHO recommends <90 days

Delays lead to poorer outcomes, including

Increased risk of suicide in first 2 years of psychotic symptoms

The Navigate Model



Stayed in treatment longer



Had greater reduction in symptoms



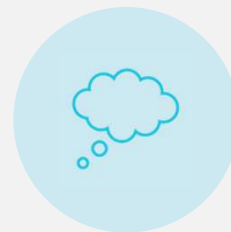
Greater improvements in quality of life



Improvements in staying in school or work



Reduction in hospitalizations



Improved insight into symptoms

Eligibility for Corrigan CSC

People ages 16-26 who are experiencing signs and symptoms of early psychosis

Would benefit from receiving all core behavioral health services, including individual therapy and psychiatry from CSC team

Outreach, Education & Engagement

Increase the number of people in the community who can recognize FEP

Inform people that effective and accessible treatment is available and to increase referrals.

Starting in October 2022 outreached formally 35 locations/agencies

Developed MOU and training for both Fall River and New Bedford CBHCs

Co-facilitate educational trainings with Mapnet in local area

Referral & Consult



100% Referrals receive consultation

All referrals receive a consult with Team Lead to ensure that CSC will be appropriate and best Allows for rapid and active information, education and assistance with referrals if CSC is not the recommended program



Consulting on ongoing care and treatment for DMH approved clients

In addition to CSC enrolled, the program has done 14 consultations with other DMH service providers



CSC can begin the referral and/or consultation with individuals prior to their discharge from acute inpatient levels of care

So far have successfully transitioned 12 individuals directly from inpatient setting to CSC

Overcoming Systematic Barriers & Challenges



Addressing Stigma



Providing Education



Practicing Cultural Humility



Location & Access



Assertive engagement

Fall River CSC Team

Team Leader

Psychiatrist

Individual Clinician
Individual
Resiliency
Treatment

Family Support and
Education Clinician

Supported
Employment and
Education
specialist (SEES)

Peer Support
Specialist

Care Coordinator

Psychologist

Medication Management

Dedicated Psychiatrist

Individuals enrolled in CSC do not have to be actively taking medication

Goal is to provide the lowest dose of meds recommended for target symptoms

The prescriber and person-served utilize shared decision making in discussion of medication

Time made to allow for education for the family as a whole

Focuses on whole physical health

Clinical Services

- Individual Resiliency Treatment (IRT)
- Family Education & Support (FE)
- Psychological Services
- Testing
- Assessments
- Risk Management

Peer Support



Research shows importance of intentional peer support



Share experience with mental health challenges and journey of recovery and resilience



Individual coaching and groups

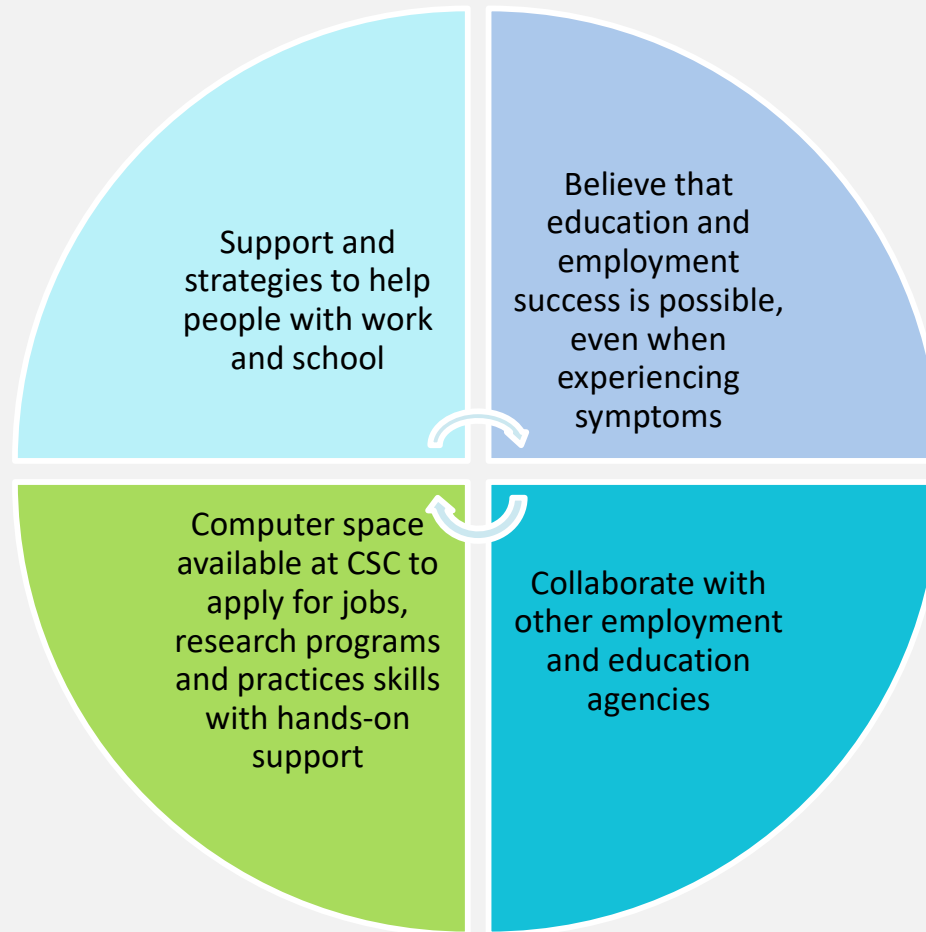


Decreases sense of loneliness



Increases hope and optimism

Supported Education and Employment Education Support



Care Coordination

Help people connect with community resources

Assistance with accessing resources

Housing

Transport

Medical care and providers

Parenting classes

Insurance

Questions

Welcome to Coordinated Specialty Care (CSC) at the Dr. John C. Corrigan Mental Health Center.

We offer a team-based approach treating early psychosis. This method has been broadly implemented throughout the U.S. and internationally.

We work collaboratively with you and your other providers, community-based supports, family supports, and/or inpatient team to help you live a rich satisfying life in the community.

PROGRAM PURPOSE

Central to CSC is to not overly pathologize the presence of psychosis. Many young people presenting with emerging psychosis or ultra-high-risk indicators may not need long-term DMH services and/or may be reluctant to be labeled as having pervasive mental illness. CSC services are highly collaborative with primary medical care, with a focus on improving your overall mental and physical health.

WHAT WE OFFER

CSC emphasizes shared decision making to address the unique needs, preferences, and recovery goals of individuals with early psychosis.

Collaborative treatment planning in CSC is a respectful and effective means for establishing a positive therapeutic alliance and maintaining engagement with you and your family members over time.

- Group and individual psychotherapy
- Medication assessment and administration
- Family Education Program
- Individual Resilience Training
- Psychoeducation focused on physical and mental awareness
- Supported Employment and Education assistance
- Coordination with primary care
- Introduction to the availability of community services and peer supports

WHO WE ARE

*Team Lead
Psychiatrist
Clinical Social Workers Certified Peer
Specialist Psychologist
Care Coordinator
Employment & Educational Specialist*

FOR MORE INFORMATION

Referrals can be made by contacting the CSC Team Lead, Jacqueline Schofield, LICSW, at (508) 235-7264.

This service is open to individuals ages 16-26, who live in the Greater Fall River and Greater New Bedford area. Prior authorization for DMH services or DMH application is not required.

Service will be provided regardless of insurance coverage. Team will work with individuals and families on payment options, as needed.

